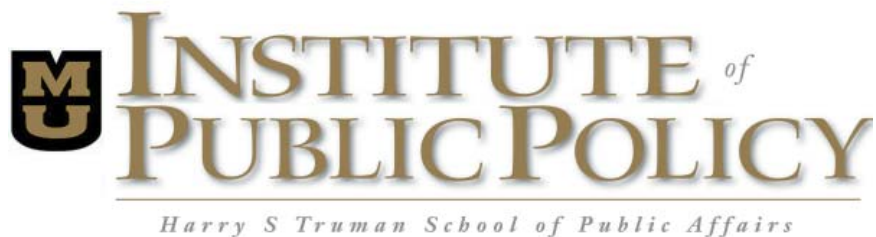


Institute of Public Policy 2007-2008 Annual Report

June 1, 2007 - May 31, 2008

*A publication from:
Institute of Public Policy
University of Missouri
137 Middlebush Hall
Columbia, MO 65211*



Institute of Public Policy 2007-2008 Annual Report

June 1, 2007 - May 31, 2008

*A publication from:
Institute of Public Policy
University of Missouri
137 Middlebush Hall
Columbia, MO 65211*



Harry S Truman School of Public Affairs

Table of Contents

Introduction.....	2
Staff, Policy Research Scholars, and Graduate Research Assistants.....	2
Overview of 2007-2008.....	3
Assisting Public Officials.....	4
Academy of Leadership in Local Governance.....	4
City of St. Charles.....	4
Encouraging Public Dialogue.....	5
Telecommunications Symposium.....	5
Transportation Forum.....	5
Women in Public Affairs.....	5
Providing an Interdisciplinary Linkage.....	6
Web Usage.....	6
Partners in Prevention.....	6
SMART Program Evaluation.....	6
Policy Resources Directory.....	7
Conducting Objective Analyses.....	7
Missouri Foundation for Health.....	7
Public Attitudes on the Environment.....	7
Child Care Subsidies in Missouri.....	8
Disproportionate Minority Contact.....	8
Increasing Organizational Capacity.....	9
Violence Against Women Act.....	9
City of Columbia.....	9
Youth Community Coalition (YC ²) Strategic Prevention Framework-State Incentive Grant (SPF-SIG).....	9
Youth Community Coalition (YC ²) Drug Free Communities Grant.....	9
Missouri Arthritis and Osteoporosis Program (MAOP).....	9
Poll Worker Train the Trainer Sessions.....	9
Website Development Module.....	10
In the Institute.....	10
Five Year Review.....	10
Policy Research Scholars.....	10
Personnel Changes.....	11
Graduate Research Assistants.....	12
Partnerships.....	13
Publications.....	13
Academic.....	13
Technical.....	14
Presentations.....	14
Grants and Contracts.....	16
Service to the Truman School of Public Affairs.....	17

Institute of Public Policy

The Institute of Public Policy seeks to enhance knowledge and understanding of public policy issues relevant to Missouri citizens by conducting objective research and facilitating public dialogue.

Staff

Barton Wechsler
Director, Truman School of Public Affairs

David Valentine
Associate Director of Public Service

Lilliard E. Richardson, Jr.
Associate Director for Policy

Zachary Birchmeier
Senior Policy Analyst

Dana Hughes
Policy Analyst

Caren Bacon
Policy Analyst

Emily Johnson
Coordinator/Policy Analyst

Diana Gaughan
Policy Analyst

Cindy Thomas
Administrative Assistant

Policy Research Scholars

Jason Grissom
Colleen Heflin
David Konisky
Jill Nicholson-Crotty
Sean Nicholson-Crotty

Graduate Research Assistants

First Year Students
Christian Arment
James Harrington
Jiaqi Liang
Benjamin Wisnewski

Second Year Students
Sara Alva
Diana Gaughan

Student Assistant
Shelley Arnsmann



Overview of 2007-2008

This report presents the activities of the Institute in terms of the Institute's vision of its role in public affairs: Assisting public officials, encouraging public dialogue, providing an interdisciplinary linkage, conducting objective analyses and increasing organizational capacity.

Assisting public officials:

- Provided training to local officials through the Academy for Leadership in Local Governance; and
- Initiated a community visioning project for the City of St. Charles.

Encouraging public dialogue:

- Sponsored a forum on Missouri's interstate transportation system in cooperation with the Missouri Department of Transportation;
- Hosted a forum on telecommunications; and
- Sponsored a program on women in public affairs.

Providing an interdisciplinary linkage:

- Worked with the Wellness Resource Center with the on-going alcohol server training program;
- Maintained the online Policy Resources Directory; and
- Collaborated with Partners in Prevention for a needs assessment, strategic planning and program evaluation.

Conducting objective analyses:

- Prepared two academic policy notes on public policy issues;
- Wrote seven Missouri-focused policy reports;
- Submitted 19 grant proposals and received 9 of those;
- Continued the assessment of Healthy & Active Communities Initiative for the Missouri Foundation for Health; and
- Assessed disproportionate minority contact in the Missouri juvenile justice system.

Increasing organizational capacity:

- Provided training for local officials;
- Conducted an evaluation of the Office of State Courts Administrator training program for those responsible for the arrest and enforcement of protection orders to protect victims of domestic violence;
- Provided assistance to community service agencies in Columbia to enable them to develop outcome measures;
- Supported the Youth Community Coalition of Columbia through two evaluation projects;
- Provided a train-the-trainer program for Missouri election officials for delivery in the summer and fall of 2008; and
- Assisted the Missouri Arthritis and Osteoporosis Program, Missouri Department of Health and Senior Services in developing a program delivery strategy.

The report concludes with detailed information about the Institute and its contribution to the Truman School of Public Affairs, the University of Missouri and the broader community.



Monroe-Paine Lecture: Bart Wechsler, Representative Ike Skelton, Chancellor Brady Deaton



Assisting Public Officials

Academy of Leadership in Local Governance

The Institute presented the Academy of Leadership in Local Governance, part of the Organizational Leadership Program, for the 7th year in 2007-2008. The Missouri Municipal League and the Missouri Association of Counties partner with the Institute to offer the training program to local government officials and administrators. The program was delivered by Dr. Bart Wechsler, Dr. David Valentine, Dr. Eric Greitens, Emily Johnson and special guest speakers: Dr. Judith Stallman of the Truman School; Dr. Guy Adams also of the Truman School; Dr. Marty Romitti of the Missouri Department of Economic Development; Mark Levin of the City of Maryland Heights; Linda Cooperstock of the Columbia/Boone County Health Department; and Chris Barnett of MU's Center for Applied Research and Environmental Systems.

Graduates of the 2007-08 Academy for Leadership in Local Governance



*front row (left to right): David Gipson, Jason McConachie, Dorothy Young, Angelica Zerbonia, Walt Siemsglusz
back row: Bart Wechsler, Jeff La Garce, Rusty Kahrs, Dean Dorhman, Mark Falloon, David Valentine*

City of St. Charles

Institute staff is assisting Dr. Bart Wechsler with Community Visioning and Strategic Planning for the City of St. Charles. The team is using the key principles of collaborative design, participatory planning, shared responsibility, action-based strategies, and on-going renewal as a basis for the community visioning and strategic planning process. The City of St. Charles will spend the next 5-6 months facilitating community dialogues, developing issues groups, identifying a shared vision of the future of the community and making recommendations to make that vision a reality. By January 2009, the planning team will compile information supplied by community members to develop a strategic plan and vision for the future of the City of St. Charles.

Encouraging Public Dialogue

Telecommunications Symposium

October 10th, 2007

The 4th Annual Symposium on Telecommunications was held at the Reynolds Alumni Center on the University of Missouri campus on October 10, 2007. The symposium was intended to provide timely and relevant information about issues and trends in current and emerging telecommunications technologies.

Participants included expert speakers from national associations, state and local public policy makers and representatives from telecommunications companies. Panelists covered key policy issues facing the nation, including the nexus between the services provided through the internet and those provided by more traditional entities as well as the importance of extending broadband services to underserved areas.

Speakers included Governor Matt Blunt; Walter McCormick of US Telecom; and Larry Irving, a former Clinton administration official. State Representatives Shannon Cooper and Edgar Emery and Senator Chuck Graham were also participants. Participants included regulators, legislators, city officials, and those employed in the telecommunications industry. Emily Johnson and Dr. David Valentine organized the conference for the Institute.



Gary Markenson, Executive Director of the Missouri Municipal League and Ken Pearson, Boone County Presiding Commissioner

Transportation Forum

November 30th, 2007

The Institute and the Missouri Department of Transportation sponsored the 2007 Symposium on Funding Missouri's Transportation Infrastructure on the University of Missouri campus. The symposium aimed to inform policymaking, governance, and facilitate public dialogue on the critical issue of transportation in Missouri.

Pete Rahn, Director of the Missouri Department of Transportation, considers the current state of transportation funding in Missouri as a "perfect storm" because three negative factors will potentially cause funding for roads and bridges to "fall off a cliff" in 2010. The combination of an end to bond funding, rising material costs, and significantly lower federal funding make this the perfect storm. The symposium was an opportunity for policymakers, consultants and other interested parties to discuss options for addressing the funding shortfall in the coming years.

The program featured a number of speakers, including Bill McKenna, former member of the Missouri Highways and Transportation Commission; Rep. Neal St. Onge, chair of the House Transportation Committee; and C.K. (Chip) Casteel, Senior Vice President of Public Policy for the St. Louis Regional Chamber and Growth Association.

Women in Public Affairs

April 8th, 2008

The Institute sponsored the third annual luncheon to discuss lessons and challenges in public service careers. Missouri State Representative Juanita Head Walton and Sarah Smith Seris (MPA '04) were the speakers. There were approximately 35 in attendance, including faculty and students from the Truman School of Public Affairs, Women's and Gender Studies and Public Health. The event was organized by a committee consisting of Dr. Lisa Zanetti, Dana Hughes, Emily Johnson, Cindy Thomas and Diana Gaughan.



Women in Public Affairs speakers: Representative Walton and Sarah Smith Seris



Providing an Interdisciplinary Linkage

Web Usage

The Institute’s website (<http://truman.missouri.edu/ipp/>) provides free access to the reports produced by the Institute of Public Policy and also by Truman School faculty. Web usage continues to grow, with the page views up nearly 22% in the second quarter of 2008 from the previous year (see table, below). Furthermore, the number of user sessions increased 39%. Finally, average daily page views are up 23% from a year ago, and nearly a five-fold increase from the second quarter in 2005 (141 views per day).

IPP Web Usage

	2nd Quarter 2006	2nd Quarter 2007	2nd Quarter 2008
Page views	18,139	19,675	23,992
Document views	8,594	17,185	20,245
User sessions	3,743	6,769	9,397
Unique users	1,611	1,657	1,828
Users making multiple visits	463	1,811	863
Page views per day	608	658	808
User sessions per day	123	223	300

Partners in Prevention

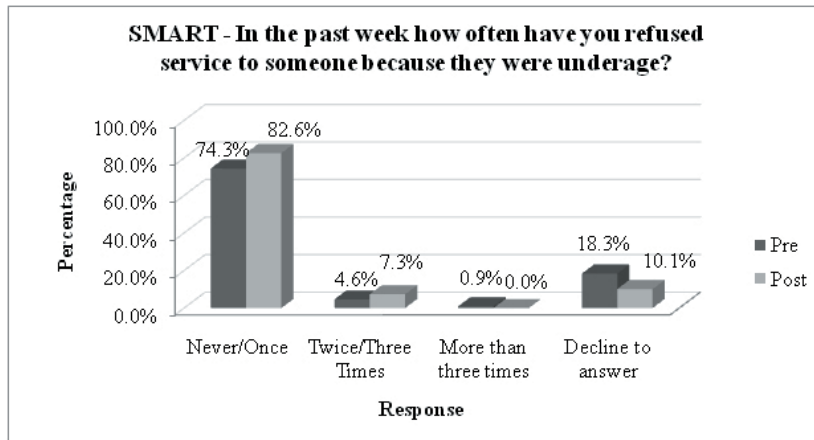
Partners in Prevention (PIP) is Missouri’s higher education substance abuse consortium. Through evaluation, funding, training, technical assistance, and coalition building, they help their members create positive change on their college campuses. IPP collaborates with Partners in Prevention to evaluate their SPF-SIG Grant from the Missouri Institute of Mental Health. This grant specifically focuses on funding one evidence-based strategy and one environmental strategy. During the first year of this project, the programming has focused on the evidence based strategy, Community Trials Intervention (CTI). Community Trials Intervention includes multiple components, allowing individual campuses to choose the strategies that work best for them. Options include education, community mobilization, enforcement, responsible beverage service training, and prevention of underage alcohol access. Institute staff collaborated with PIP staff for needs assessment, strategic planning, program evaluation and reporting. This partnership will continue through September 2009.

SMART Program Evaluation

Binge drinking and underage drinking among students is a persistent problem for college campuses and their surrounding communities. Particularly, underage student access to alcohol at retail establishments and service to intoxicated persons are issues of interest to both city and campus officials. The Institute of Public Policy works in cooperation with the University of Missouri Wellness Resource Center to evaluate their SMART alcoholic beverage server training program. This training program is free to any Missouri establishment that has a liquor license and it is an individual based, online course. These two aspects help overcome barriers such as cost and staff turnover that other server training programs face.

Between June 1, 2007 and June 31, 2008, 109 participants in the program completed the pre and

Servers report more frequently refusing service to underage patrons



post tests of knowledge and behavior. The majority (88.1%) of respondents agreed or strongly agreed that the SMART program had a positive impact on their ability to be informed servers. Eighty-eight percent agreed that the training program helped them determine how to avoid serving minors in their establishments. Also, 73% agreed that the training helped them determine how to avoid serving someone who is already intoxicated. In addition to reports of improved knowledge and skill, the post survey reveals changes in reported behaviors. Servers reported stopping service to intoxicated persons more frequently after the training (83.5% vs. 75.2%). Additionally, servers report refusing service to underage patrons more frequently after the training.

Policy Resources Directory

The Institute has hosted the Policy Resources Directory on its website since 2005. The directory is an online tool that policymakers and citizens can use to identify and contact MU faculty with specific public policy interests. The directory allows faculty to identify their policy fields and to write a brief summary of their policy interests. Contact information is also provided so that those looking for policy information can contact faculty listed in the directory for that expertise. Over the last year (June 1, 2007 – May 31, 2008), the directory has been viewed over 2200 times by individuals seeking faculty with policy knowledge and expertise. Visit the directory at <http://truman.missouri.edu/ipp/directory/>.

Conducting Objective Analyses

The Institute remains committed to making a contribution to policy discussions through on-going research and publication of policy related reports and analyses. These reports may derive from policy-related academic interests, papers written by graduate students, or analyses conducted by Institute staff. A few of these reports from 2007-2008 are summarized below.

Missouri Foundation for Health

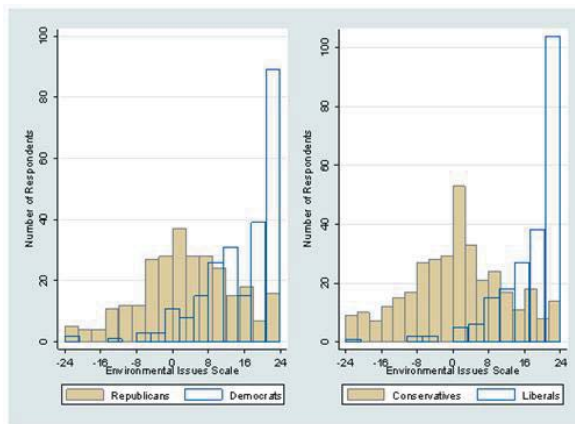
The Missouri Foundation for Health (MFH) has contracted with the Institute to serve as the external evaluator for its Healthy & Active Communities Initiative. In 2005, 15 grantees were funded to implement projects that support efforts to enhance the health and activity of local communities; an additional 18 projects were funded in 2006. As part of this Initiative, Institute staff visit grantee sites to see projects in action and interview key project staff in order to understand the impact of the project and its ability to create environmental level change over the long term. Evaluators obtain information about community context, organizational capacity, and policy implications of each project. The evaluation team also interviews key informants in each grantee community to gain an understanding on the community readiness to take the steps necessary to make the community healthier and more active. The evaluation centers on identifying the lessons that can be learned from this Initiative to enable MFH and other funding agents to identify factors that create environmental level change.

Public Attitudes on the Environment *Dr. David Konisky*

Researchers in the Harry S Truman School of Public Affairs at the University of Missouri have recently completed a national survey of 1,000 adults on attitudes about the environment. The survey asked respondents about their level of concern for the environment and about their preferences for government action to address a wide set of environmental issues. The survey was administered as part of the 2007 Cooperative Congressional Election Study (CCES), a 10,000 person survey conducted through the collaborative efforts of a consortium of universities. The 2007 CCES was administered in November 2007.

A large majority of Americans indicate that they are either somewhat concerned (32 percent) or very concerned about the environment (38 percent). Respondents were also asked to rate the quality of the local, national and global environment. While over two-thirds of Americans perceive the quality of their local environment to be good, more than half believe that the global environment is bad. When

Distribution of Environmental Attitudes, by Party Identification and Political Ideology*



*This figure illustrates the distribution of respondent support for government action to address a variety of environmental problems. Higher values represent greater overall support, while negative values indicate the respondent's preference for less government effort on a range of environmental issues.

asked which environmental issues it would like to see the government address, the public expresses the most desire to see action taken toward local and national pollution issues. The best predictor of an individual's environmental preferences is his or her political attitudes. Support for government action is stronger among Democrats or ideological liberals than among Republicans or ideological conservatives. See the full report, "Public Attitudes on the Environment," Report 4-2008 on the Institute's website.

Dr. David Konisky is a Policy Research Scholar in the Institute of Public Policy and an Assistant Professor in the Harry S Truman School of Public Affairs.

Child Care Subsidies in Missouri *Katharine Ann Ball*

In Missouri, child care subsidies are provided to low-income families by the Department of Social Services and are funded through the federal Child Care and Development Fund. The program is based on need for care, which includes employment, job training, education and other work activities. Federal guidelines recommend that states establish eligibility standards to include families with an annual income of up to 85% of the state median income level, which was \$43,266 in 2006 for a family of four. Currently, Missouri's income eligibility is approximately 40% of the state median income level, or \$31,898. Missouri ranks 50th in the United States for providing child care subsidies to low-income families. Subsidies are provided for families up to 110% of the federal poverty level (FPL) in Missouri.

The average annual cost of child care in Missouri for two children is over \$7,000. However, if a single, working mother with two children makes \$18,500 a year, she would not qualify for any state assistance. With the passage of more stringent work requirements for TANF, low income families in Missouri will face new child care challenges in the coming years despite the recent increase in the minimum wage. See the full report, "Child Care Subsidies in Missouri," Report 9-2007 on the Institute's website.

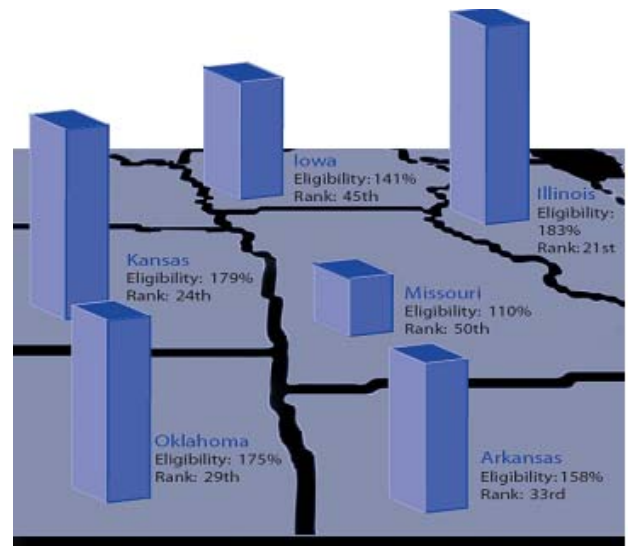
Ms. Ball received her BS in Human Development and Family Science from Brigham Young University, her MA from the University of Connecticut and is currently working on her PhD at the University of Missouri in Human Development and Family Studies.

Disproportionate Minority Contact

The Institute was contracted by the Missouri Department of Public Safety to examine Disproportionate Minority Contact (DMC) in the Missouri juvenile justice system. Institute staff examined data reported in 2004 and 2005 from 32 Missouri counties. The data represented juvenile contact at one point prior to entry into the juvenile justice system and four points in the system: these were school disciplinary actions, and referral to juvenile court, petition for trial, trial, and sentencing. School disciplinary actions were examined to determine whether DMC exists in school disciplinary policies and whether higher school DMC occurs in counties with higher DMC in the juvenile justice system.

Previous research indicates the DMC exists in Missouri and this report supports that finding. Disproportionate minority contact is most prevalent at the beginning stage in the juvenile justice system and decreases as youth progress through the system to trial. The report also found that higher school DMC predicted higher juvenile justice DMC, even after accounting for poverty and severity of school offense. The presence of this relationship suggests, but does not prove, that community attitudes may play some role in DMC both at school and in the justice system. Although income inequality cannot be resolved in the short term, the data suggest that there is an opportunity to reduce DMC by focusing attention and training on the earliest stages in the disciplinary/justice system: school disciplinary processes and referral to juvenile court.

Comparison of Surrounding States in Child Care Subsidies



Partnership for Children (2007). Missouri's Child Care Subsidy Program: Benefits for Families, Businesses, & Tax-Payers. Issue at a Glance, January 2007.

Increasing Organizational Capacity

Violence Against Women Act

In 2006, the Office of State Courts Administrator (OSCA) received a grant from the Department of Justice, Office of Violence Against Women to conduct training and make technology enhancements to improve arrest policies and enforcement of protection orders to protect victims of domestic violence. The Missouri State Highway Patrol, the Missouri Office of Prosecution Services, the Missouri Board of Probation and Parole, and Missouri Coalition Against Domestic and Sexual Violence (MCADSV) have partnered with OSCA to conduct trainings and improve technology to facilitate effective communication among partners and improve the coordinated community response to domestic violence.

The Institute of Public Policy is conducting an external evaluation of grant activities and assessing opportunities for future training and technical assistance to improve the state's response to domestic violence. Evaluation activities have included assessment of training effectiveness, process evaluation of technology improvements, and compilation of federal report data. During the upcoming months, multidisciplinary training will be held for law enforcement, prosecutors, court personnel, judges, probation/parole officers, and victim advocates. This training will be presented by national recognized speakers from the Battered Women's Justice Project and will be evaluated for effectiveness by IPP staff.

City of Columbia

In 2007-2008 the Institute conducted outcome-based training sessions for social services agencies funded through the Boone County Community Services Advisory Commission (BCCSAC) and the Heart of Missouri United Way in cooperation with the University of Missouri's office of social and economic analysis. The goal of the training was to increase participants' knowledge of outcome-based measurement, increase their ability to develop measurable outcomes, properly evaluate selected outcomes, collect quality data, and properly report outcomes and data to the BCCSAC and United Way. Training of 38 social service agencies was conducted by Emily Johnson during the summer and fall of 2007. A final report and detailed training synopsis was presented to the BCCSAC and the Heart of Missouri United Way in spring of 2008. This program has been renewed for the 2008-2009 fiscal year.

Youth Community Coalition (YC²) Strategic Prevention Framework-State Incentive Grant (SPF-SIG)

The Youth Community Coalition of Columbia, Missouri has contracted with the Institute of Public Policy for two years to conduct the evaluation activities required under their SPF-SIG. During year one of the SPF-SIG, the Institute of Public Policy conducted a needs assessment, a resource assessment, and a community readiness assessment. In addition, they assisted the Youth Community Coalition in developing and writing their strategic plan. During year two of the SPF-SIG, the Institute of Public Policy has conducted the evaluation activities for the evidence based program and the environmental strategy and assisted the Youth Community Coalition in preparing and writing reports to the funding agency.

Youth Community Coalition (YC²) Drug Free Communities Grant

The Youth Community Coalition of Columbia, Missouri has contracted with the Institute of Public Policy for two years to conduct the evaluation activities required under their Drug Free Communities Grant. During year one and year two of the Drug Free Communities Grant, the Institute has developed an evaluation plan for their grant activities, developed data collection tools, assisted the Coalition in revising its mission and vision statements, conducted a coalition assessment, and assisted the coalition in preparing and writing reports to the funding agency.

Missouri Arthritis and Osteoporosis Program (MAOP)

The Institute of Public Policy assisted the Missouri Arthritis and Osteoporosis Program, Missouri Department of Health and Senior Services in conducting their surveillance and evaluation activities. The Institute created GIS maps showing the number of courses by county held by the Regional Arthritis Centers which were used in developing future plans for the MAOP. In addition, the Institute developed a report summarizing the participant satisfaction evaluations of the courses.

Poll Worker Train the Trainer Sessions

The Institute began a new project in May 2008 working with the Elections Division of the Office of the Secretary of State. The



Institute will present interactive workshops to County Clerks and their staff throughout Missouri that highlight techniques and tips for effectively training election poll workers. Presentations and trainings will focus on voter service, proper ballot procedure and security, provisional balloting, and proper equipment use. The Institute will provide hands-on instruction designed to make poll worker training interesting and informative. The Institute is also working with the Secretary of State to develop a training program for newly elected clerks and is developing a leadership training program for county clerks.

Website Development Module

On July 17th, 2007, Bret Sanders taught a module on Website Development for the International Association of Clerks, Recorders, Election Officials, and Treasurers (IACREOT) members in Charlotte, NC. The teaching module was a part of the 36th Annual Conference. Attendees of the module receive credit toward achieving a Chancellor's Certificate in Public Administration from the University of Missouri – St. Louis. The 39 attendees included election officials, recorders of deeds, court recorders and various administrators from county governments in 12 states from around the country. The topics discussed in the module included: methods to determine if your organization's website needs improving; deciding whether to hire a professional design firm, freelance designer or to conduct web design in house; elements of the web design process; how to hire a contractor for web design; and an illustration of best practices in web design from the websites of those in attendance.

In the Institute

This has been a year of continuity and change for the Institute. The Institute was the subject of a five-year review that culminated in a report to the Provost, submitted in July 2007. Subsequently, the Institute and the Truman School made organizational changes in response to the recommendations of the external review team. The review and the School's initial response to the review are described below.

Five Year Review

The review team consisted of professors from Florida State University, the University of Illinois and the University of Missouri-St. Louis. The team recommended that:

- 1) There be a full-time, tenure-line director of the Institute;
- 2) The mission of the Institute should be clear and focused. The mission should also be clear about how Institute products and activities are distinct from and complementary to the Truman School;
- 3) Additional funding for public service from the university is necessary if the university takes public service seriously;
- 4) Institute sustainability and development requires increased faculty buy-in;
- 5) There should be additional investments made in senior staff to enhance the Institute's ability to negotiate contracts, write proposals and supervise projects; and
- 6) An advisory committee should be established that actively includes stakeholders.

Initial Response to Recommendations

The review process was constructive and the recommendations will assist the Institute as it moves into the next five years.

Several steps have been taken to fulfill or partially fulfill the recommendations. Dr. Wechsler appointed Dr. Lilliard Richardson as Associate Director for Policy and Dr. David Valentine as Associate Director for Public Service (recommendation 1). An internal advisory committee has been appointed to enhance faculty buy-in (recommendation 4) and as partial fulfillment of recommendations 2 and 6. The Advisory Committee is composed of the following: Professors Colleen Heflin, David Konisky, Jeff Milyo, Jill Nicholson-Crotty, Lilliard Richardson, Brian Dabson, David Valentine, and Bart Wechsler. The Institute will address issues of mission clarity and the complementary nature of the Institute's products and activities in conjunction with the advisory committee and the Truman School faculty.

Policy Research Scholars

Faculty Policy Research Scholars will write at least one grant proposal, write at least one policy brief, and support the mission of the Institute. The faculty are:

Jason Grissom (Ph.D. Political Economics, Stanford University): Dr. Grissom's research focuses on the economics and politics of education, education policy, education governance and teacher labor markets. Recent work includes evaluations of high-stakes accountability programs and school finance centralization and research into the institutional causes of teacher attrition and migration.



Colleen Heflin (Ph.D. Sociology, University of Michigan): Dr. Heflin's research interests include welfare and poverty policy, social stratification, health inequality, and women and work. Her recent work appears in the *Journal of Policy Analysis and Management*, *Journal of Health and Social Behavior*, *Social Service Review*, *Social Science Quarterly*, and *Social Science & Medicine*.

David Konisky (Ph.D. Political Science, Massachusetts Institute of Technology): Dr. Konisky has broad research interests in American politics, specializing in regulation, bureaucracy, and environmental policy. His current research focuses on state environmental regulatory competition, the politics of environmental enforcement, and local wetlands protection. Konisky's work appears or is forthcoming in a number of journals including the *American Journal of Political Science*, *the Journal of Public Administration Research and Theory*, *Policy Studies Journal*, *Political Analysis*, and *Political Research Quarterly*. He is also co-author of the book: *Superfund's Future: What Will it Cost?*

Jill Nicholson-Crotty (Ph.D. Political Science, Texas A&M University): Dr. Nicholson-Crotty's research focuses on the management of public and nonprofit organizations and the interaction of these sectors in the implementation of public policy. She has focused this research in the areas of education, health, and criminal justice policy. Her current projects investigate the strategic decision by nonprofit organizations to undertake political activities, such as legislative and administrative lobbying. She has published work in a variety of journals, including *Public Administration Review* and the *Journal of Public Administration Research and Theory*.

Sean Nicholson-Crotty (Ph.D. Political Science, Texas A&M University): Dr. Nicholson-Crotty's teaching and research interests include state and local politics and policy, federalism and intergovernmental relations, and criminal justice. He has published in numerous journals such as the *American Journal of Political Science*, *Political Research Quarterly*, *Public Administration Review*, *Social Science Quarterly*, and the *Journal of Public Administration Research and Theory*.

The Institute's grant-writing skill was recognized by MU's Office of Sponsored Programs for the third consecutive year in 2008. This year, the recognition was for a proposal prepared for the Office of State Courts Administrator regarding an evaluation of training programs for officials that are charged with responding to violence against women. The proposal was added to the Model Proposal File which is a resource of successful proposals made available to the MU research community.

Personnel Changes

Cindy Thomas was hired as the Administrative Assistant in June 2007. She is a 2007 graduate of Truman State University in Kirksville, Missouri with a Bachelor of Science in Political Science. She completed her Dean's Certificate in Public Health in December 2007 and is currently pursuing a Masters in Public Health with an emphasis in Health Policy and Administration at the University of Missouri.



Dana Hughes joined the IPP team in August 2007. Previously she worked as a program coordinator at San José State University where she developed and managed alcohol, drug abuse, and sexual assault prevention activities for their 30,000 students. In this position she developed significant program assessment, development, and coordination skills. She also wrote and managed multiple grants and developed skills working with diverse populations. In addition to her program responsibilities at San José State she taught an undergraduate health education class in their Health Science Department. Since joining the IPP staff, she has worked on program evaluations in the areas of nutrition, physical activity, college alcohol abuse prevention, violence against women, and rural health policy. She is teaching in the new Master of Public Health Program and will be teaching in Women's and Gender Studies in Fall 2008. She received her Master of Public Health degree from the University of Michigan in 2004.

Zachary Birchmeier is a Senior Research Analyst who began working for the Institute in July 2007. He received a Ph. D. in Psychology from Miami University in 2004. He has consulted for the Health Foundation of Greater Cincinnati, as well as Miami University's School-based Mental Health program. He taught research methods at the graduate and undergraduate level. He is the author of 7 peer-reviewed articles as well as one book chapter, and is currently editing a book for Cambridge University Press.



Diana Gaughan was hired as a Policy Analyst in May 2008. She completed her Master of Public Affairs degree at the Harry S Truman School of Public Affairs with a specialization in Public Policy and a graduate certificate in Geographic Information Science. She previously worked for the Institute as a Graduate Research Assistant.

Nathaniel Albers left the Institute in December of 2007 and currently works as a project analyst for Research into Action, Inc. in Portland, Oregon.

Bret Sanders left the Institute in July 2007 to pursue a medical degree at the University of Missouri.

Graduate Research Assistants

Five graduate research assistants worked for the Institute during the 2007-08 academic year: Sara Alva, Diana Gaughan, Christian Arment, James Harrington, Jiaqi Liang, and Benjamin Wisnewski. Sara and Diana graduated in May of 2008. Sara is pursuing her Ph.D. at the University of Missouri in agricultural economics.

Christian, James, Jiaqi and Benjamin obtained internships for the summer of 2008. Christian worked at the Mid-Missouri Regional Planning Commission in Ashland. James was an administration and finance intern for the City of Maryland Heights. Jiaqi worked for the International Chamber of Commerce, International Court of Arbitration in Paris, France. Benjamin was an intern for the Missouri Growth Association located in St. Louis.



Partnerships

Alumni Association, University of Missouri
Center for Health Policy, University of Missouri
City of Columbia
City of St. Charles
Department of Women's & Gender Studies, University of Missouri
Master of Public Health Program, University of Missouri
Missouri Arthritis and Osteoporosis Program, Department of Health and Senior Services
Missouri Association of Counties
Missouri Department of Economic Development
Missouri Department of Public Safety
Missouri Department of Transportation
Missouri Foundation for Health
Missouri Juvenile Justice Association
Missouri Sentencing Advisory Commission
Missouri State Auditor
Missouri Municipal League
Office of Social and Economic Data Analysis (OSED), University of Missouri
Office of State Courts Administrator
Robin Carnahan, Missouri Secretary of State
Rural Policy Research Institute
Wellness Resource Center, University of Missouri
Wendy Noren, Boone County Clerk
Youth Community Coalition, Columbia MO

Publications

Academic

- Bertelli, Anthony, and Lilliard E. Richardson, Jr. (Forthcoming 2008). "The Behavioral Impact of Drinking and Driving Laws." *Policy Studies Journal*. Acceptance in December 2007.
- Bertelli, Anthony, and Lilliard E. Richardson, Jr. (Forthcoming 2008). "Ideological Extremism, Branding, and Electoral Systems: Multimember versus Single Member Districts." *Public Choice*.
- Houston, David J., and Lilliard E. Richardson, Jr. (2008). "Motorcycle Fatality Rates and Mandatory Helmet-Use Laws." *Accident Analysis and Prevention* 40:200-208.
- Houston, David J., and Lilliard E. Richardson, Jr. 2007. "Motorcycle Safety and the Repeal of Universal Helmet Laws." *American Journal of Public Health* 97(11):2063-2069.
- Houston, David J., and Lilliard E. Richardson, Jr. 2007. "Risk Compensation or Risk Reduction? Seat Belts, State Laws, and Traffic Fatalities." *Social Science Quarterly* 88(4):913-936.
- Konisky, David, Jeff Milyo, and Lilliard E. Richardson, Jr. (Forthcoming 2008). "Environmental Policy Attitudes: Issues, Geographical Scale, and Political Trust." *Social Science Quarterly*.



Shore, Cecilia, Birchmeier, Zachary, desJardins, Marie, Pratt, Wanda (2007). "Time-to-degree: Some suggestions for keeping on schedule as a PhD student," *Association for Psychological Science Observer*, 20(10).

Valentine, David. (forthcoming 2008). "Missouri" *Political Encyclopedia of the U.S. States and Regions*, Donald Haider-Markel, ed. CQ Press.

Technical*

Albers, Nathaniel (Report 1-2008, January 2008). "Payday Loans in Missouri."

Ball, Katharine (Report 9-2007, October 2007). "Childcare Subsidies in Missouri."

Dabson, Brian, Hughes, Dana, Bacon, Caren. (June 2008). "Health of Our People," *Policy Opportunity Snapshots: Contexts, Challenges and Opportunities*, prepared for the Rural National Assembly, June 16-18, 2008 in Washington, D.C. See ruralcompact.org.

Diener, J. & Richardson, L.E. (Report 3-2007, July 2007). "Attitudes Toward Seat Belt Use Among Urban & Rural Teens."

Diener, J. & Richardson, L.E. (Report 4-2007, July 2007). "Seat Belt Use Among Rural & Urban Pickup Drivers."

Kluser, Ashley (Report 7-2007, July 2007). "Electronic Commerce, Sales Tax & the Implications for Missouri."

Kluser, Ashley (Report 8-2007, July 2007). "A Profile of Missouri Energy Use."

Konisky, David (Report 4-2008, March 2008). "Public Attitudes on the Environment."

Milyo, Jeffrey (Report 10-2007, December 2007). "The Effects of Photographic Identification on Voter Turnout in Indiana: A county-level analysis."

Valentine, David (Report 7-2008, revised February 2008). "Citizens' Commission on Compensation for Elected Officials."

**Unless otherwise noted, all technical reports can be found online at the website of the, Institute of Public Policy, Truman School of Public Affairs, University of Missouri: <http://truman.missouri.edu/ipp/publications/>.*

Presentations

Albers, Nathaniel, & Birchmeier, Zachary (August 2007). Crafting a policy pitch that will be a hit. Workshop given at the 2nd Annual Convening of the Healthy & Active Communities Initiative of the Missouri Foundation for Health, Lake of the Ozarks, MO.

Bacon, Caren, Stokes, Shannon, Valentine, David. The development of a strategic plan to address risky drinking behaviors (underage and binge drinking) in 12-25 year olds. Presentation at the 135th APHA Annual Meeting, November 2007, Washington DC.

Bacon, Caren, Stokes, Shannon. Using a multi-phase assessment process to influence program selection and evaluation development. Presentation at the American Evaluation Association's Annual Conference, November 2007, Baltimore, MD.



- Birchmeier, Zachary, Nicholson-Crotty, Sean, Stokes, Shannon, & Valentine, David. (March 2008). Assessment and identification of disproportionate minority contact in Missouri. Presentation to the Missouri Juvenile Justice Advisory Group, Jefferson City, MO.
- Birchmeier, Zachary, Valentine, David, Bacon, Caren, Gaughan, Diana, Hughes, Dana, Johnson, Emily, Nicholson-Crotty, Jill, & Thomas, Cindy. (March 2008). Process and methods of evaluating the Healthy & Active Communities Initiative. Presentation at the Missouri Foundation for Health Evaluation Peer Exchange, St. Louis, MO.
- Bacon, Caren, Birchmeier, Zachary, & Hughes, Dana. (May 2008). Uncover your success: Tracking individual participant changes. Workshops given to the 2006 Healthy & Active Communities Initiative grantees of the Missouri Foundation for Health.
- Konisky, David, Jeff Milyo, and Lilliard E. Richardson, Jr. "Environmental Policy Attitudes: Issues, Geographical Scale, and Political Trust." Presented at the Western Political Science Association Meeting in San Diego in March 2008.
- Konisky, David, Jeff Milyo, and Lilliard E. Richardson, Jr. "Legislative Term Limits and Public Opinion of State Government." Presented at the Midwest Political Science Association Meeting in Chicago in April 2008.
- Nicholson-Crotty, Jill, Albers, Nathaniel, Bacon, Caren, Birchmeier, Zachary, Johnson, Emily, Hughes, Dana, and Valentine, David. (November 2007). Preliminary results from an evaluation of obesity prevention programs in Missouri. Presentation at the 2007 Meeting of the American Public Health Association, Washington D.C.
- Richardson, Lilliard E., Jr. (April 23, 2008). "Defining Problems: Picking Performance Measures," National Summit on Grants and Courts, Washington.
- Richardson, Lilliard E., Jr. (December 17, 2007). "Evaluating Public Policy," Office of Organizational Results of the Missouri Department of Transportation, Columbia, Missouri.
- Richardson, Lilliard E., Jr. (November 14, 2007). "Projecting and Forecasting Workshop," Missouri Grants Summit, Jefferson City, Missouri.
- Sanders, Bret. (July 2007) "Web Development" presented to the 36th Annual Conference of the International Association of Clerks, Recorder, Election Officials and Treasurers.
- Valentine, David. (March 10, 2008). "Legislative term limits in Missouri." Missouri School of Law.
- Valentine, David. (December 7, 2007). "Effective bill drafting." Presented at the Missouri Bar's CLE training, Jefferson City.
- Valentine, David. (September 10, 2007). The Academy for Leadership in Local Governance, Missouri Municipal League, Kansas City.



Grants and Contracts

Bacon, Caren, PI, *Instrument Development to Evaluate the Drug Free Communities Grant*, Columbia Youth Community Coalition, \$8,526.00, April 1, 2007 – September 30, 2007.

Bacon, Caren, PI, *MAOP Fact Sheet and Evaluation Report*, Missouri Arthritis and Osteoporosis Program, \$5,883, May 2, 2007 – August 2, 2007.

Bacon, Caren, PI, *Evaluation Training*, Missouri Foundation for Health, \$11,091, May 1, 2008 – June 30, 2008.

Hughes, Dana, PI, Bacon, Caren, *Assistance in Preparation of the Health Policy Scan*, RUPRI, \$2,575, March 11, 2008 – April 11, 2008.

Hughes, Dana, PI, *Partners in Prevention Evaluation*, University of Missouri Wellness Resource Center, \$10,200, October 22, 2007 – September 30, 2009.

Johnson, Emily, PI, *Outcomes-based Measurement Training*, City of Columbia, \$8,360.44, May 1, 2007 – January 31, 2008.

Johnson, Emily, PI, *Help America Vote College Program*, \$25,704, June 1, 2008-December 31, 2008.

Valentine, David, PI, *Continuation of YCC SPF-SIG Evaluation*, Columbia Youth Community Coalition, \$22,000.00, April 1, 2007 – September 30, 2008.

Valentine, David, PI, *Assessing Disproportionate Minority Contact*, Missouri Department of Public Safety, \$48,949.63, May 1, 2007 – September 30, 2007.

Valentine, David, PI, *Evaluation of the Missouri Grants to Encourage Arrest Policies and Enforcement Protection Orders Program*, Office of Violence Against Women, Missouri Office of State Courts Administration, \$49,500.00, December 1, 2006 – September 30, 2008.

Valentine, David, PI, *An Evaluation of Healthy and Active Communities Year II*, Missouri Foundation for Health, \$267,019, January 1, 2007 – December 31, 2007.

Valentine, David and Birchmeier, Zachary, PI, *An Evaluation of Healthy and Active Communities Year III*, Missouri Foundation for Health, \$271,492, January 1, 2008 – May 31, 2009.

Valentine, David, PI, *Training for County Clerks and Poll Workers*, Missouri Secretary of State, \$92,145.03, June 1, 2008 – May 31, 2009.

Wechsler, Bart, PI, *Community Vision and Strategic Plan Preparation for the City of Saint Charles*, City of Saint Charles, \$30,000, March 1, 2008 – February 28, 2009.

Service to the Truman School of Public Affairs

Teaching

Research Methods, Richardson, L. Fall 2007

Policy Workshop, Richardson, L. Winter 2008

PA 8280, MPA internship, Valentine, D., Fall 2007.

PA 8282, Practicum I, Valentine, D., Summer, 2007, Winter 2008

PA 8282 Practicum II, Valentine, D., Fall, 2007, Winter 2008

Committees

TSPA Policy Committee, 2006 to the present – Richardson, L.

TSPA Policy Committee, 2004 to the present – Valentine, D.

TSPA Personnel Committee, 2002 to the present – Richardson, L.

TSPA Ph.D. Committee, 2007-2008 – Richardson, L.

Women in Public Affairs – Johnson, E., Hughes, D., Thomas, C., Gaughan, D.

Master's Thesis Committee for Karin Vanderzee, Department of Psychology, Miami University
- Birchmeier, Z.

Outreach

Editorial Assistant, American Journal of Public Administration – Thomas, C.

Search Committees

IPP Policy Analyst search committee – Valentine, D., Birchmeier, Z., Bacon, C., Hughes, D.,
Johnson, E., Thomas, C.



*“Not all readers become leaders.
But all leaders must be readers.”
- Harry S Truman*



Institute of Public Policy
Truman School of Public Affairs
137 Middlebush
University of Missouri
Columbia, MO 65211
<http://truman.missouri.edu/ipp>
Phone: (573) 882.1739